

A NEW MICROVELIA FROM VENEZUELA (HEMIPTERA:VELIIDAE)

By CARL J. DRAKE¹ AND JANIS A. ROZE²

This paper lists six species of the genus *Microvelia* Westwood (1834) heretofore recorded in the literature from Venezuela. These are *Microvelia pulchella* Westwood (1834), *M. longipes* Uhler (1893), *M. marginata* Uhler (1893), *M. albonotata* Champion (1898), *M. duidana* Drake and Maldonado (1952) and *M. ayacuchana* Drake and Maldonado (1952). The apterous form of the new species described below is unknown.

Microvelia timida, new sp. (Plate 15)

Small, blackish brown with the pronotum in front of humeri and lateral sides of thorax (largely) brownish; connexiva above and beneath brownish testaceous with exterior margin edged with dark fuscous; antennae dark fuscous with basal part of first segment pale testaceous; Legs dark fuscous with coxae, trochanters, basal part of femora above and most of femora beneath pale testaceous. Pronotum a little variable in color, sometimes with the dark fuscous extending anteriorly on median part of disc. Head black above, mostly testaceous beneath. Thorax beneath and venter blackish. Rostrum brownish testaceous with apex dark. Length, 1.90 mm.; width, 0.80 mm.

Head 0.40 mm. wide across eyes, moderately convex above, with smooth, median, longitudinal, impressed line and usual basal marks; eyes large, dark fuscous. Antennae long, slender, pubescent with a few, scattered longer hairs, measurements—I, 0.17; II, 0.15 mm.; III, 0.20 mm.; IV, 0.30 mm. Rostrum with apex reaching a little beyond prosternum. Anterior tibia slightly shorter than femur (25:30), provided with a short, cylindrical, spurlike projection which extends obliquely downward on the inferior side of the apex of segment (fig. 1a.) All legs unarmed, clothed with short pubescence. Hind femur 0.56 mm. long, the tibia 0.62 mm. Tarsal segment II of both middle and hind legs a little longer than I.

Abdomen and hemelytra subequal in length, each 1.40 mm. long. Last venter of male deeply broadly excavated behind, with apical margin at bottom of excavation only feebly rounded and without median apical notch; parameres strongly curved with apex narrowed, falciform. Female usually slightly stouter than male, with last abdominal segment a little longer than preceding; color and markings as in male.

HOLOTYPE (male) and ALLOTYPE (female), both alate, Silva Lista, D. F., Venezuela, in Drake Collection (U.S.N.M.). PARA-

¹Smithsonian Institution, Washington, D. C.

²University of Venezuela, Caracas, Venez.

TYPES several alate specimens of both sexes, taken with type, in collections of both authors.

Separated from *M. marginata* Uhler by coloration and antennal measurements. The short, cylindrical, apical projection of the anterior tibia is quite distinctive of this species. The male abdomen beneath is without a tubercle on sixth segment as is found in that sex of *M. mimula* B.-White.

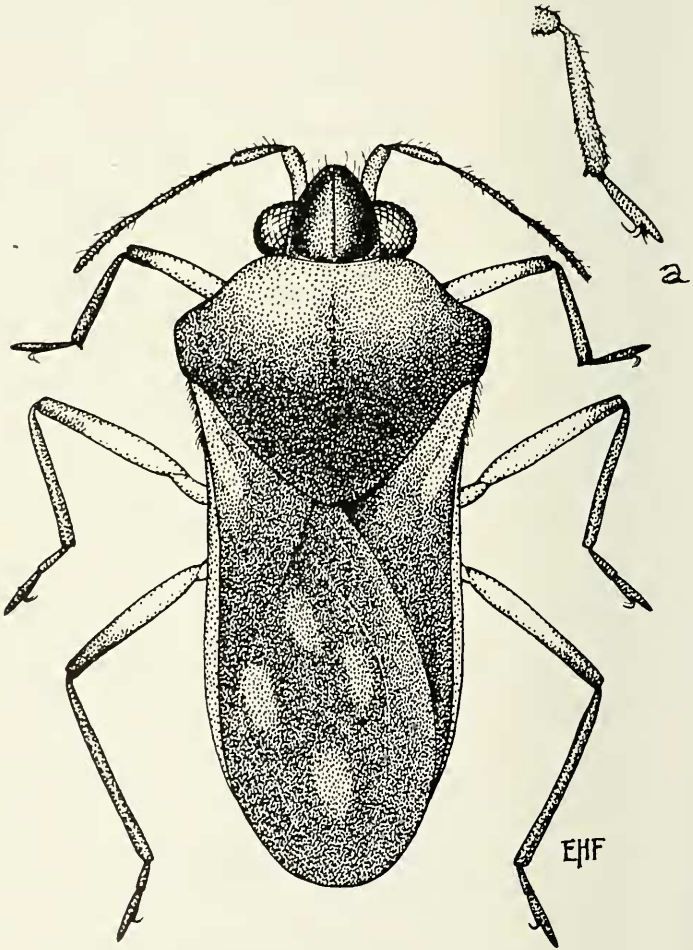


PLATE 15

Microvelia timida, new sp. (male); anterior tibia showing apical projection.